

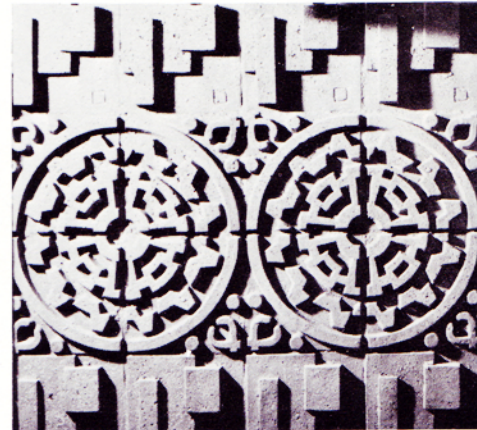
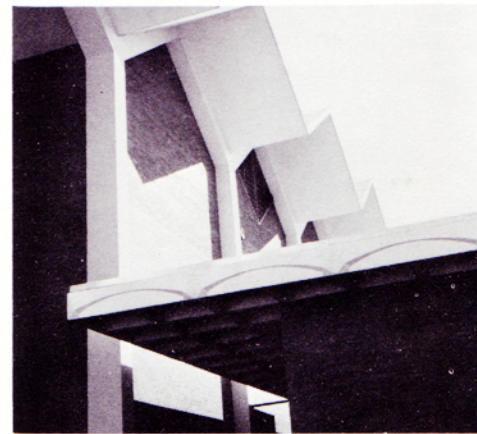
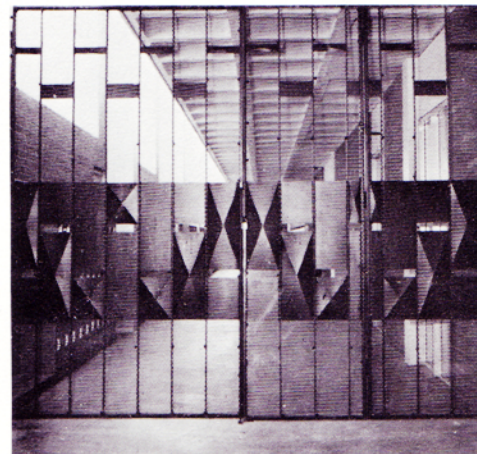
Creativity...

Exemplifies Intricate Campus Scenery



Cafeteria meals and snack bar delicacies await the starved students who dash out of the 100 building to be first in line. Scattered throughout the sunken snack bar area are the round, flashy orange tables, with mosaic patterned tops. The combination of color and designs brighten dreary days and add artistic flavor to the lunches.

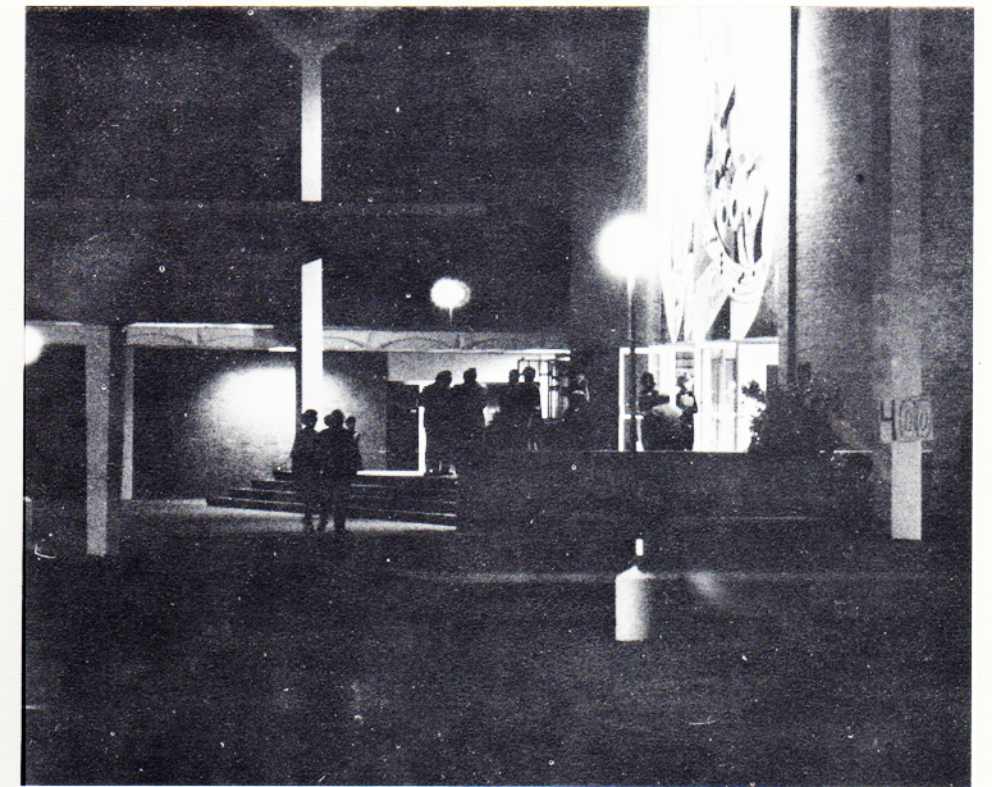
A closer look at sections on campus exhibits many picturesque ornaments that usually go unnoticed by many bypassers. The top site is one of the four gates protecting the out-door lockers between the 400 and 500 buildings. The decorative wall that shades the south side of the cafeteria is illustrated by the second scene, and the third campus view displays the zig-zag borders, which dramatize the auditorium roof. The last Aztec design exemplifies the wall that adorns auditorium lobby.



After the elaborate structure of Coronado was developed, more recently built Phoenix schools were similarly constructed. The Don's campus is presented in an architecturally creative manner. Unlike the customary flat roof, a zig-zag outline borders the roofs of the main buildings; the gym, cafeteria, and auditorium. Concrete umbrellas, which add interest to the structural appearance, align the pathways leading to the halls of knowledge.

Artistically talented Dons have added a personal touch by designing and compiling mosaic murals. These art compositions enhance the auditorium entrance and enlighten the snack bar tables.

Walls, gates, classrooms, plant designs, and the sights and sounds of school life complement CREATIVITY on campus.



The sounds of silence permeates the still night at Coronado as Don's parents assemble in the auditorium for a brief introduction to Open House, held Nov. 1. The spotlight accentuates the structural decor of the 400 building mall and the auditorium entrance which greets visitors with the mosaic mural designed by Mr. Joseph Gatti. The concrete umbrellas and simple lamp posts act as guides through the mall.



As a pepper-upper before the Homecoming game, a bonfire blazes the night of Oct. 20. After the Kofa King effigy, constructed by the Freshman Class, was devoured by the scorching flames, the excited observers received the true spirit of Homecoming and the true meaning of being a proud Coron-

ado Don. Vivacious spectators form a circle around the bonfire to view the flames that reach a high of 25 feet. The entire campus glows from the radiance of the traditional Homecoming bonfire.